



SOLARNET Summer School
Solar atmospheric dynamics - From waves to instabilities and jets

June 25 - 30, 2023
GYULA, HUNGARY

SUMMER SCHOOL TRAVEL GUIDE

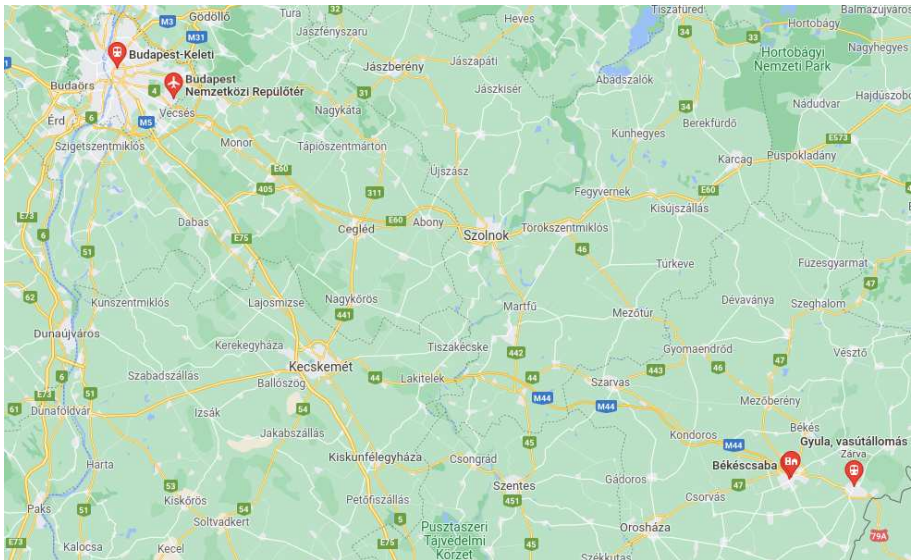
Contents

1	PRACTICAL TRAVEL INFORMATION	3
1.1	Arrival at Budapest Liszt Ferenc International Airport	6
1.2	From Budapest Airport to Keleti railway station	7
1.3	From Keleti railway station to Gyula via Békéscsaba	10
2	LOCATIONS	12
2.1	Summer School locations	12
2.2	Services in Gyula	15
2.3	Sights of Gyula	16
3	OTHER INFORMATION	17
4	QUESTIONS?	17

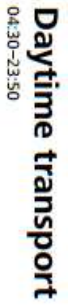
1 PRACTICAL TRAVEL INFORMATION

From Airport to Gyula

1. Arrival at Budapest Liszt Ferenc International Airport (traditionally known as 'Ferihegy Airport')
2. Transfer to Budapest-Keleti railway station (1 hr), not far from the city centre of Budapest, by public transport, taxi or other means of choice
3. Departure to Békéscsaba via. train (2.5 hr), the tickets can be purchased from the following website: <https://jegy.mav.hu>
4. Departure to Gyula after a train switch at Békéscsaba (20 min)
5. 7-20 min walk to the Guest Houses



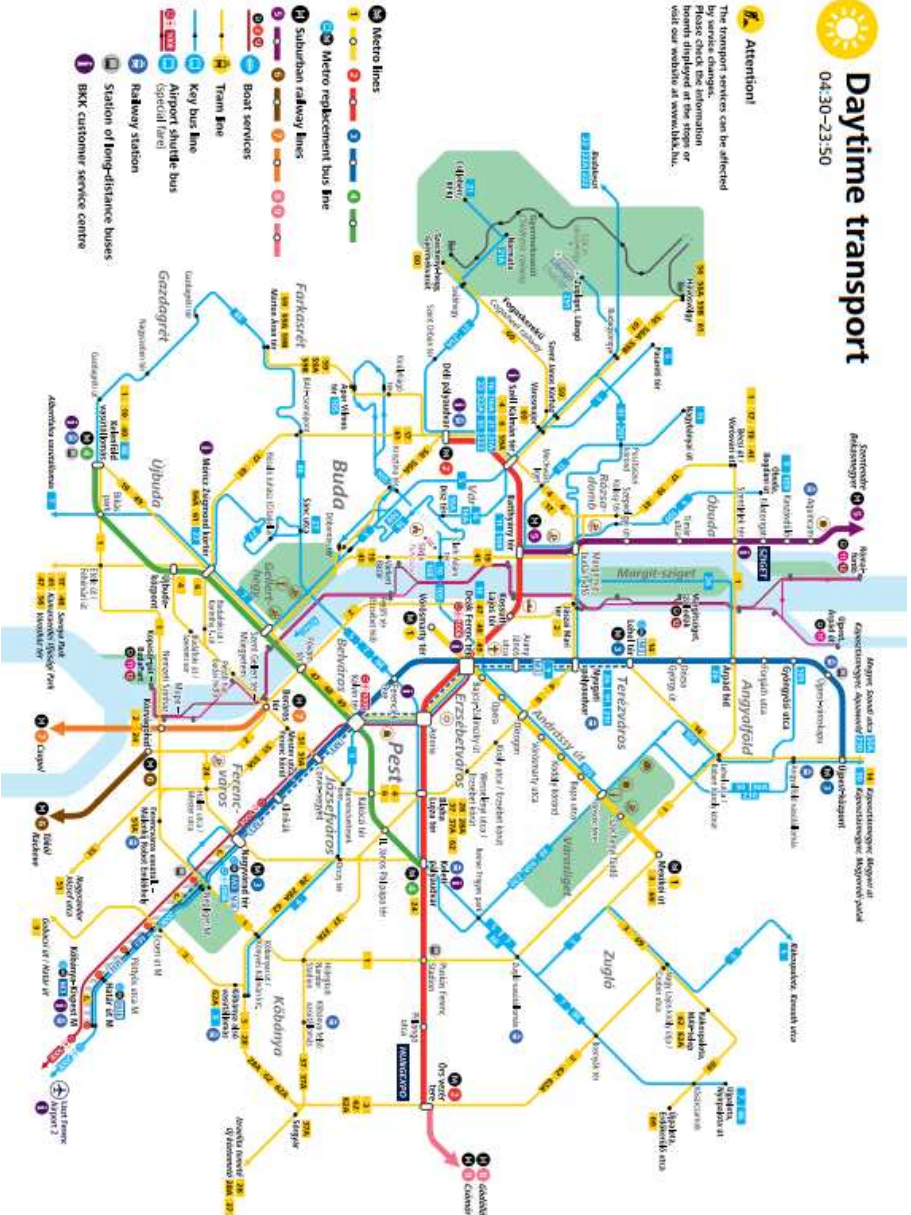
Google Map view of Budapest and Gyula



Daytime transport

The transport services can be affected by service changes.

PLEASE CHECK THE INFORMATION
MONTHS DISPLAYED AT THE STOPS OR
VISIT OUR WEBSITE AT [WWW.TBKZ.HU](http://www.tbkz.hu).



Day-time Metro Map of Budapest



Night transport

23:50-04:30



Night-time Metro Map of Budapest

1.1 Arrival at Budapest Liszt Ferenc International Airport

You can find the information you need **before your flight** here:

https://www.bud.hu/en/passengers/before_flight

You can find **flight and travel information** on the Budapest International Airport website here:

https://www.bud.hu/en/passengers/flight_and_travel_information

Payment by bank card is possible in most places in Hungary, including at ticket machines. Nevertheless, if you need cash, you have two options at the airport.

1. **Currency exchange (Interchange)** You will find several offices at the airport both in Terminal 2A and Terminal 2B. There is also an office in the waiting room (Skycourt). You can find their opening hours on the airport's website.
2. 16 banknote dispenser **Euronet ATMs** available non-stop to passengers at the Budapest Liszt Ferenc International Airport.
 - Skycourt Departure: 1 ATM is located in the internal transit area next to the escalator.
 - Terminal 2B Arrival: 2 ATMs at the baggage claim, 2 in the outside hall and 1 outside the building near the taxi booth.
 - Terminal 2A Arrival: 3 ATMs at the baggage claim, 5 in the outside hall and 1 outside the building near the taxi booth.
 - Pier 1: 1 ATM is located next to Heinemann Duty-Free.

Unlike other Euronet ATMs across the city, this particular ATM does not charge a commission to withdraw cash if you have a HUF account (multi-currency Forex card). OTP Bank ATMs throughout the city also do not charge any commission to withdraw if you have a HUF account.

1.2 From Budapest Airport to Keleti railway station

Public transport provides easy access to the city centre from Budapest Airport (HUN: *Liszt Ferenc Nemzetközi Repülőtér*). **The bus stops are located on the arrivals level, between the two terminals 2A and 2B on the ground floor level.** A 100E bus should take you to Deák Ferenc tér, a key transport hub on the Pest side of the city. The buses run around the clock, every 7-9 minutes on busy Mondays, Fridays and Sundays, every 10 minutes on other days with less traffic, and every 30-40 minutes between 1.00 and 3:00 in the morning. Attention! Passengers require a **special ticket for bus line 100E**: the airport shuttlebus single ticket costs 1,500 HUF. Other types of tickets or passes are NOT accepted on this direct service.

Would you choose to get to **Deák Ferenc tér via. the bus 100E, the final stop of 100E, next, you will need to take the M2 metro (red line) to Keleti railway station (HUN: *Keleti-pályaudvar*)**. Alternatively, you can also get off 100E earlier at **Kálvin tér, and from there take the M4 metro (green line) to Keleti Railway Station.**

From the Airport, another option is the **bus 200E**, which departs from next to the bus 100E. Due to the renovation of the metro network, the route of this bus often changes, so **we do not recommend it!** If you do choose this, you have to transfer to the M1 metro (blue line) at Kőbánya-Kispest metro station and get off at Deák Ferenc tér. Depending on the renovation of the metro, some sections of the metro will be replaced by buses.

Whether you go to Keleti Railway Station from Deák Ferenc tér or Kálvin tér, you will need a single ticket. This must be validated at the metro entrance and kept until the exit, as they can be requested anywhere in the metro area. If you choose the 200E bus, you can also board this bus with an other single ticket (only at the first door) and you can validate your ticket next to the door when boarding.



Ticket Vending Machines in Budapest

Tickets and travelcards

Single tickets

 Single ticket 350 HUF	 Block of 10 single tickets 3 000 HUF
 Transfer ticket 530 HUF	 Airport shuttle bus single ticket (100E)

The *single ticket* is valid only for one trip on a single line without interruption, on the full length of the route. Transfers between the metro lines are possible with the ticket.

With the *transfer ticket*, you can change to another service once. Validate ticket number 1 for the first vehicle and ticket number 2 after you transfer.

Travelcards

 24-hour travelcard 1 650 HUF	 24-hour group travelcard 3 300 HUF
 72-hour travelcard 4 150 HUF	 Seven-day travelcard 4 950 HUF

Up to five passengers travelling together may use the group travelcard.

Special fares apply to boats, bus line 100E, services leaving Budapest as well as to heritage transport vehicles. For a full list of travel products, terms and conditions of free and discounted travel please visit bkk.hu

Where to get your ticket



Ticket vending machines

Tickets and passes every day, round the clock with cash or bankcard.

BKK Customer Service Centres

Maps and brochures are also available. Cash and bankcards are accepted.

On board

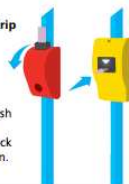
Only single ticket for a higher price. Please have the exact amount ready as the driver does not have change.

Always validate your ticket

You must validate your ticket as soon as you board. On the metro network, stamp your ticket with the validating machine before you enter the station. No need to validate travelcards or passes.

Validate your ticket at the beginning of your trip

To use the old-style, manual validator, insert your ticket into the opening on top and punch it by pulling the frame of the slot towards you. Keep your ticket until the end of your trip. Inspectors will issue a penalty fare to you if you travel without a validated ticket. You can pay in cash on the spot or you can also pay with a bankcard at designated customer service centres. Please check bkk.hu/en/ticket-validation for more information.



Tickets and travelcards



Közösségi közlekedés a repülőtérrel a belvárosba
From the airport to the city centre by public transport



100E

Átszállás nélkül / No transfer required
Egyedi díjszabás / Special fare
00:00–24:00



Egyedi díjszabás / Special fare



200E

Átszállással / Transfers required
Normál díjszabás / Regular fare



Hétköznap este
On weekdays, evenings
03:20–23:04

Hétköznap napközben
On weekdays, daytime
03:45–20:28



Hétköznap éjjel
At night on weekdays
23:05–03:44

Hétköznap éjjel
At night at weekends
23:05–03:19



BUDAPEST



www.bkk.hu | bkk@bkk.hu | +36 1 3 255 255
bkkbudapest | bkkbudapest

QR kód
A QR kódot a mobiltelefonjával
leolvasva a BKK honlapján
találhatja meg a buszjárat
részleteit, a díjat és a
várakozási időt.

BUDAPEST GO
Közösségi közlekedés
Public transport app
Töltsd le a BKK honlapjáról
vagy az App Store-ról.



100E Budapest 2020

Shuttle Service Route from Budapest airport to city centre


1.3 From Keleti railway station to Gyula via Békéscsaba



There are no direct trains between Budapest to Gyula. Hence the train journey involves a transfer at Békéscsaba. Trains to Gyula leave from Keleti Railway Station every hour from 07:10. The last trains leave at 18:10 and 20:10. The total journey time is approximately 2 hours 50 minutes.

The train tickets may be purchased online or directly at the train station at the ticket office. We definitely recommend the former and would advise you to please visit the following website: <https://jegy.mav.hu>. The illustration below will help you what to type when purchasing the rail ticket! It is important to select the right train numbers (see the gray box).

Once you type in your travel details like departure and arrival station and time of departure, a list of train options should appear. While selecting your ticket, for a more comfortable journey, we advise you to opt for the ticket with a green symbol and with a 2 in a box (2nd class).



MÁV-GROUP
DOMESTIC TRAVELS
INTERNATIONAL TRAVELS
CUSTOMER SERVICE

Ticket purchase
Schedules

From?
Budapest Keleti (Budapest-Keleti)

Via

To?
Gyula

☐ Also for return journey
☒ Departure
☐ Arrival

Date?
Today
Time?
11:00

Passengers
1x Adult (26-65 years)
[Passengers and discounts](#)

☐ I only need supplementary ticket or seat reservation.

Search

[Detailed search](#)

Booking Tickets - <https://jegy.mav.hu> website

Back

Passenger data

Budapest Keleti (Budapest-Keleti)
Gyula

Outbound: February 15, 2022

Please review the data and complete them if necessary.

+Passenger
+Bicycle
+Dog

ATTENTION! If you add or modify the passengers or their discounts, that will result in new search!

Adult (26-65 years)
3 990 Ft

Full name *

Date of birth *

Add discount

Time and route

Today

Budapest Keleti (Budapest-Keleti)
Gyula

Passengers and trains

1 passenger

Dep.: Feb 15, 2022 17:10

379 KÖRÖS InterCity

37618 passenger train

Offers

4 Passenger data

5 Seating properties

6 Payment

Train numbers - <https://jegy.mav.hu> website

2 LOCATIONS

2.1 Summer School locations

Accommodation - Guest Houses

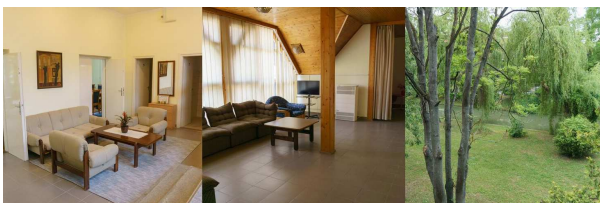
Accommodation will be provided at the Guest Houses of the Council of Gyula city.

- 1. Guest House (48 Béke Avenue, Gyula)
- 2. Guest House (2 Szent László Street, Gyula)

We will hold the Welcome Reception in the garden of the 2nd guest house (Monday 26 June, 17:30 onwards) at nr 2 Szent László Street. We will make together "Hungarian goulash and stew paprikas on open fire. We'll provide the ingredients and you can test your cooking skills :-D.



1 Guest House



2 Guest House

Almásy Mansion



Lectures and coffee breaks will be here in the Almásy Mansion. This will also be the venue for the conference dinner (Almásy Mansion Roof Terrace, Thursday 29 June, 19:00).

The historically insignificant lives of domestic staff has always been mysterious, however, the Almásy Mansion exposes these secrets. On top of the colourful lives of the once inhabiting aristocrats, the everyday existence of their serving staff is also showcased.

With the help of 21st century interactive technology, the exhibition offers the experience of discovery to the visitor by showing who stoked the stoves, how many litres of water were consumed in a day, who laundered the undergarments of the countess, what was the daily schedule of the domestic staff like, what were their responsibilities, as well as where and how they lived while making the lives of the aristocratic family comfortable invisibly and unnoticed.

You can find many interesting things on the castle's website:

<https://gyulaikastely.hu/en/>.

Bay Zoltán Solar Observatory (GSO)

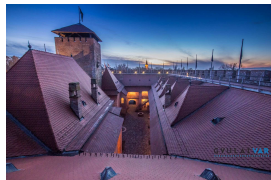


Arrive at the Observatory in about a 15-minute comfortable walk from the train station (*HUN: vasútállomás*). The Observatory is located at 'Göndöcs-kert' (Göndöcs Garden, that is actually a nice park), at the top of the Gyula Water Tower (*HUN: Gyulai víztorny*). One cannot miss it as it is 46 m tall! A simple google search should help you find it (search: Göndöcs-kert).

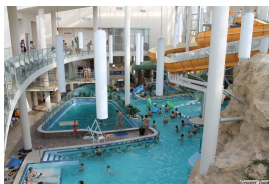
Gyula Castle

Informal welcome: Gyula Castle Bufe Rondella, Sunday 25 June, 18:00 onwards

The castle's archaeological excavation and reconstruction began in the 1950s, the museum and theatre opened in 1962 and 1964 respectively. It has been in its today's state since 2005, awaiting visitors with 24 exhibition halls. A small, but typical fortress dating back to XV. century. The first factual mention of the fortress building is from 1445. From the construction to its surrender for the Turks, Gyula Fortress can be linked significantly with the royal court.



Gyula Castle Bath (Aquapark)



Bring your own bath suitm, as on Wednesday 29 June, 17:00-19:00 we plan to have a relaxing session in the spa!

Budapest is the „spa and bath capital” of Europe, and Gyula is the cousin. One of the most beautiful lido and thermal baths of Hungary, the Gyula Castle Spa has been developed in the former 8.5-hectare park of the Almásy mansion. At present, it is a nature conservation area. At placing buildings and pools it was an important standpoint that the construction would influence the trees in the mansion park the least of all, and a green surface as spacious as possible would await the visitors arriving here. It would be a great shame not to try out the various, hot (and also ice-cold) pools naturally enriched with minerals that revive your body!

2.2 Services in Gyula

Here is a non-exhaustive list of services in Gyula.

Grocery Stores

- SzuperMarket, Real-Elesker Kft, Kossuth Lajos tér 5. (12 min)
- CBA, Pósteleki utca 22. (10 min)
- Budrio ABC, Real-Elesker Kft., Béke sgrt. 69. (12 min)
- Tom Market, Béke sgrt. 14 (7 min)

Bakeries

- Idessuss Pekseg, Béke sgrt. 10. (8 min)
- Pekseg, Megyeház utca 10. (13 min)
- Lipoti Pekseg, Kossuth Lajos tér 3. (11 min)

Pharmacy

- Coronella Patika, Nürnbergi utca 1., (6 min) - closed on Sunday!

Taxi

- 5700 Gyula Béke sugárút 9-11.
- +36 (66) 444333
- <https://gyulataxi.eu>

Békés County Assembly Pandy Kalman Hospital

- Semmelweis 1. GPS: 46.640114,21.274912
- +36 66 526 526
- <https://bmkk.eu>
- If it's a big problem and the person answering the phone doesn't speak English, you can also call me +36304162995.

Gym

- Atlas Fitness Center, Gyula Leiningen u. 2, (7 min)

Restaurants

- Sörpince Vendéglő, Kossuth Lajos tér 2 (11 min)
- Komló Étterem, Béke sgrt. 8 (9 min)
- Venezia Pizzéria, Jókai Mór u. 20 (8 min)
- Hamburger Bar, Dr. Adler Ignác u. 1 (11 min); Delivery: <https://hambibar.hu>

2.3 Sights of Gyula

ERKEL SQUARE in Gyula is located in the immediate vicinity of Petőfi square. The bronze bust of Ferenc Erkel (a famous Hungarian composer, besides Zoltan Kodaly and Bela Bartok), inaugurated on June 26, 1896, was created by Ede Kallós. Erkel Square was renovated in 2020, one of the special parts of which is the lighting planted in the cobblestones around the statue, which symbolizes the sheet music and notes of the Hungarian national anthem. There is also the famous „100-year-old confectionery” in the square, next to which rises the Catholic parish church of Our Lady of Nádi.



THE CENTENNIAL CONFECTIONERY The second oldest confectionery in Hungary, which operates since 1840 in the beautiful building built in imperial style, with walls covered by paintings and furnished by unaltered original Biedermeier furniture offers its traditional cakes, sugar powdered slices, chocolates and ice creams of many different assortments. This con-

fectionery succeeds in taking its guests back in time and in the environment full of bustle of the old fashioned „cafes” of the last century of which only a few remained untouched like this.

3 OTHER INFORMATION

Hungarian 101

- Hello - Szia
- Good morning! - Jó reggelt!
- Goodbye! - Viszlát!
- Could you write that down, please. - Kérem ezt írja le.
- I need help, please! - Kérem, segítsen!
- Would you show me... - Meg tudná mutatni...
- Where does the train depart to Gyula? - Honnan indul a vonat Gyulára?

Emergency

Emergency and some important numbers:

- Hungary's international area code: +36
- Free emergency hotline available 24/7: 112
- Ambulance: 104 (Mentő)
- Fire service: 105 (Tűzoltóság)
- Police: 107 (Rendőrség)
- Information hotline of the Hungarian State Railways (MÁVDIREKT):
+36 40 349 4949

4 QUESTIONS?

For further questions, you can send an email to solarphysicsfoundation@gmail.com or visit

http://hspf.eu/Summer_School_2023/solarnet_gyula.html website.